

ZOLA GLOSS



EX-STOCK



DOOR SPECIFICATION

Description	Slab
Finish	High gloss polyurethane
Base material	MDF
Door thickness	18mm
Edge colour	As face - gloss
Reverse colour	As face - melamine matte

LEAD TIMES EXCLUDING DELIVERY (WORKING DAYS)

FINISH	STANDARD PRODUCT
Painted ex-stock colours	EX

STANDARD DRAWERFRONTS & DOORS

- 115 x 597
- 140 x 297
- 140 x 397
- 140 x 447
- 140 x 497
- 140 x 597
- 140 x 797
- 140 x 897
- 140 x 997
- 140 x 1197
- 175 x 397
- 175 x 497
- 175 x 597
- 283 x 497
- 283 x 597
- 283 x 797
- 283 x 897
- 283 x 997
- 283 x 1197
- 355 x 497
- 355 x 597
- 355 x 797
- 355 x 897
- 355 x 997
- 355 x 1197
- 450 x 597
- 495 x 597
- 570 x 297
- 570 x 397 sample door
- 570 x 447
- 570 x 497
- 570 x 597
- 645 x 597
- 715 x 147
- 715 x 257
- 715 x 267
- 715 x 275
- 715 x 275 pair
- 715 x 297
- 715 x 315
- 715 x 315 pair
- 715 x 320 quadrant door
- 715 x 347
- 715 x 397
- 715 x 447
- 715 x 497
- 715 x 497 plain frame
- 715 x 547
- 715 x 597
- 895 x 297
- 895 x 347
- 895 x 397
- 895 x 447
- 895 x 497
- 895 x 497 plain frame
- 895 x 597
- 980 x 597
- 1245 x 297
- 1245 x 397
- 1245 x 447
- 1245 x 497
- 1245 x 597
- 1965 x 497
- 1965 x 597

ORDER ONLINE
ONLINE.UFORM.CO.UK

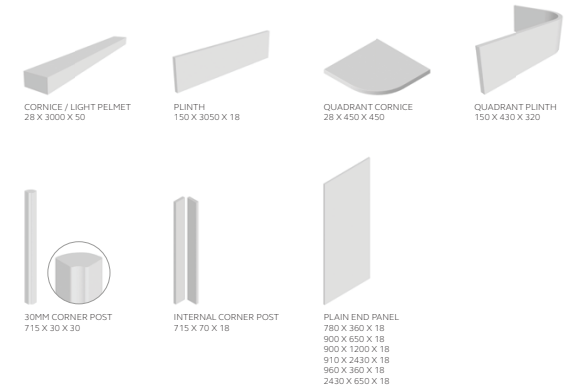
DOORS & ACCESSORIES

STANDARD DOORS



STANDARD DOOR PLAIN FRAME includes frosted glass QUADRANT DOOR

STANDARD ACCESSORIES



CORNICE / LIGHT PELMET 28 X 3000 X 50 PLINTH 150 X 3050 X 18 QUADRANT CORNICE 28 X 450 X 450 QUADRANT PLINTH 150 X 430 X 120

30MM CORNER POST 715 X 30 X 30 INTERNAL CORNER POST 715 X 70 X 18 PLAIN END PANEL 780 X 360 X 18, 900 X 650 X 18, 900 X 1200 X 18, 910 X 2430 X 18, 960 X 360 X 18, 2430 X 650 X 18

ZOLA GLOSS HANDLELESS



ORDER ONLINE
ONLINE.UFORM.CO.UK



EX-STOCK



DOOR SPECIFICATION

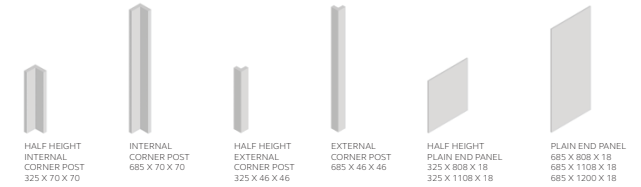
Description	Slab
Finish	High gloss polyurethane
Base material	MDF
Door thickness	18mm
Edge colour	As face - gloss
Reverse colour	As face - melamine matte

LEAD TIMES EXCLUDING DELIVERY (WORKING DAYS)

FINISH	STANDARD PRODUCT
Painted ex-stock colours	EX

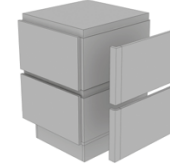
HANDLELESS DOORS & ACCESSORIES

160 x 497
160 x 597
160 x 797
160 x 897
160 x 997
160 x 1197
325 x 497
325 x 597
325 x 797
325 x 897
325 x 997
325 x 1197
490 x 597
685 x 147
685 x 297
685 x 315
685 x 315 pair
685 x 347
685 x 397
685 x 447
685 x 497
685 x 597



HANDLELESS KITS

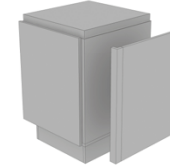
HALF HEIGHT L-SHAPE PANEL & POST KIT FOR BASE UNIT



HALF HEIGHT L SHAPE PANEL & POST KIT FOR BASE UNIT*

CODE	KIT INCLUDES
prefix-325600LPANPTKT	1 x half height external corner post 1 x plain end panel 325 x 808 2 x mdf fixing batons

FULL HEIGHT L-SHAPE PANEL & POST KIT FOR BASE UNIT



FULL HEIGHT L SHAPE PANEL & POST KIT FOR BASE UNIT

CODE	KIT INCLUDES
prefix-685600LPANPTKT	1 x external corner post 1 x plain end panel 685 x 808 2 x mdf fixing batons

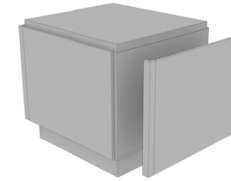
HALF HEIGHT C-SHAPE PANEL & POST KIT FOR 900 WIDE ISLANDS



HALF HEIGHT C SHAPE PANEL & POST KIT FOR 900 WIDE ISLAND*

CODE	KIT INCLUDES
prefix-325900CPANPTKT	2 x half height external corner posts 1 x plain end panel 325 x 808 2 x mdf fixing batons

FULL HEIGHT C-SHAPE PANEL & POST KIT FOR 900 & 1200 WIDE ISLANDS



FULL HEIGHT C SHAPE PANEL & POST KIT FOR 900 WIDE ISLAND

CODE	KIT INCLUDES
prefix-685900CPANPTKT	2 x external corner posts 1 x plain end panel 685 x 808 2 x mdf fixing batons

HALF HEIGHT C SHAPE PANEL & POST KIT FOR 1200 WIDE ISLAND*

CODE	KIT INCLUDES
prefix-3251200CPANPTKT	2 x half height external corner posts 1 x plain end panel 325 x 1108 3 x mdf fixing batons

FULL HEIGHT C SHAPE PANEL & POST KIT FOR 1200 WIDE ISLAND

CODE	KIT INCLUDES
prefix-6851200CPANPTKT	2 x half height external corner posts 1 x plain end panel 685 x 1108 3 x mdf fixing batons

Please refer to pages 270-275 for fitting details.

* Please note: 2 panel kits are required for each half-height base run / island end solution.